

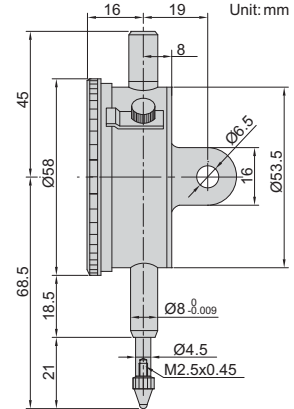
JEWELLED
BEARING



2308-10A

- Jeweled bearing
- Supplied with limit pointers and bezel clamp
- Optional accessory: backs (page 132), contact points (page 128~131)

DIAL INDICATOR



Code	Range	Graduation	Accuracy	Hysteresis	Range/rev	Dial reading	Remark
2308-3A *	3mm	0.01mm	14 μ m	3 μ m	1mm	0-100	lug back
2308-5A *	5mm	0.01mm	16 μ m	3 μ m	1mm	0-100	lug back
2308-10A *	10mm	0.01mm	17 μ m	3 μ m	1mm	0-100	lug back
2308-3FA *	3mm	0.01mm	14 μ m	3 μ m	1mm	0-100	flat back
2308-5FA *	5mm	0.01mm	16 μ m	3 μ m	1mm	0-100	flat back
2308-10FA *	10mm	0.01mm	17 μ m	3 μ m	1mm	0-100	flat back

* Supplied with manufacturer calibration certificate